

HOW TO MAKE AN A-LINE SKIRT BY **Sewgirl**

You will need: a skirt pattern (I used New Look style 6053 style E), 1.5m medium weight fabric, I used **Stamped by Ellen Luckett Baker** linen/cotton by **Kokka** from www.clothkits.co.uk, a trusty sewing machine, dressmakers scissors, a reel of thread and an 18cm closed end zip (match colour to the background), pins, 0.5m med weight fusible interfacing (this gives your waistband facing more structure), a needle and tacking thread in a contrast colour, a stitch ripper (optional), a zip foot attachment (optional), an iron.

This is a very flattering A – line skirt which sits 2.5cm below the waistline and has a facing rather than a waistband. I've made it in lots of fabrics and it always turns out well, and it corresponds with your normal dress size (although always check measurements first compared with those on the pattern).

Its a simple to make skirt, made in two pieces, front and back, with facings, zip on the side seam and darts at the back.

You can adjust the length of this skirt to suit you, so either a respectable just above the knee or a mini version. Here we go!



CUTTING OUT THE PIECES

Fold your fabric lengthways with the wrong sides of the fabric facing each other ie the right side outermost. Press. Lay flat on a table.

NB If your fabric has a large print, bear in mind that the fold line will be at the centre of the skirt front and back.

So locating the 4 pattern pieces needed for style E, FRONT (5), BACK (6), FACING FRONT (7) and FACING BACK (8), you can see that the sizes are marked along the outer edge, so check for your size line.

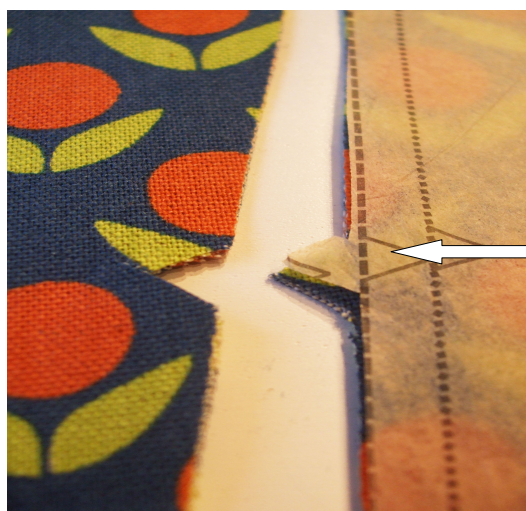
Trim down the excess tissue, you dont have to cut out the pattern piece just around it.

With the fabric print in the right direction, take pattern piece (5) and lay on fabric adjacent to the foldline as indicated on the pattern, with the pattern piece print side down. Then repeat with pattern piece (6) with the pattern print side up. Pin in place to hold in place about 6-8 pins each piece).





Cut around each piece following the line for your size, now when you get to a notch (a small triangle) cut outwards. (A notch is like a marker, which you will need to help you later).



A notch.



Lay your FACING pieces (7) and (8) on folded fabric and also the fusible interfacing, pin, then cut out following the size lines, so you have two facings FRONT and BACK and the same in interfacing.



Remove pins then iron the interfacing on the back of its respective piece.

Place to one side.

DARTS

Darts give shape to a garment to make it fit better, they are folded triangle shape pleats at the side or top edge of a garment, To make these we use TAILOR TACKS to help us.

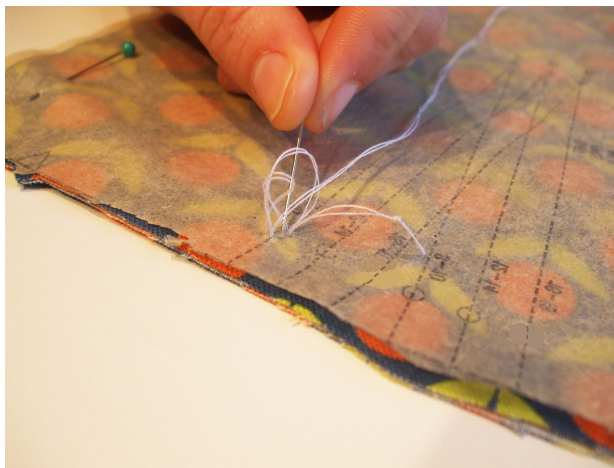
So before removing the paper pattern from the FRONT and BACK, mark out your DARTS by using TAILOR TACKS.*

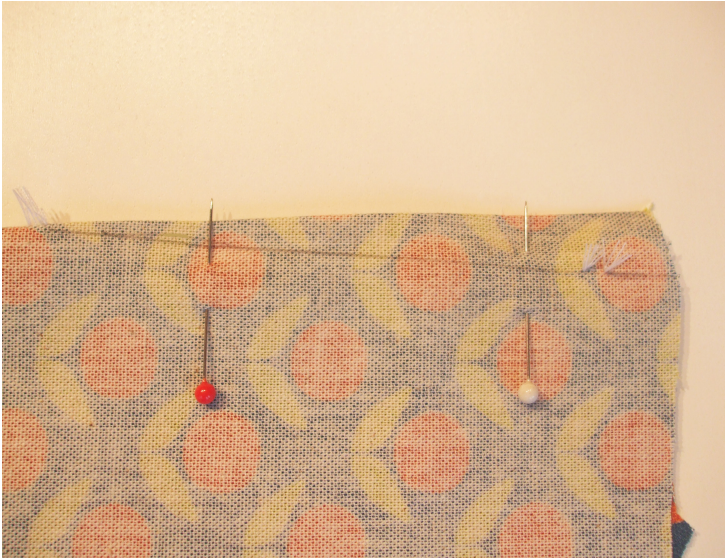
*TAILOR TACKS are made by using a length of tacking thread and hand sewing needle, sew some loops over and over a few times at the three marker dots for your size, taking the needle right through the fabric and back again.

Remove all pins and carefully lift off the pattern, then slowly unfold skirt piece.

When threads are pulled apart, snip down the middle leaving marker threads each side.

These thread markers will define your dart shape.





Now sew the darts. Pinch together the dart with right sides of fabric together, so that the markers meet each other, pin then press.



Stitch dart following marker points (why not draw a line with a ruler and some tailors chalk as a sewing guide).

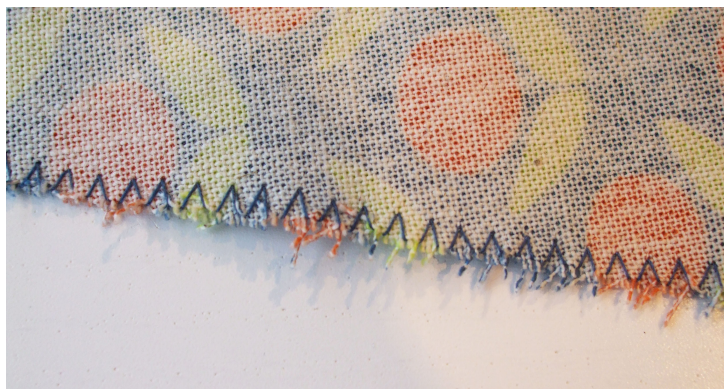


Leave long ends at tip end of dart and tie together, this neatens it off and keeps it sharp.



Press the darts in towards the centre of skirt.

Sew a line of stitching approx 1cm from top edge FRONT piece and BACK, this is called **STAY STITCHING** and it holds the darts in place as well as preventing the top edge from stretching.



SEWING THE SKIRT

Finish all the raw side edges of FRONT and BACK with a machine zig zag stitch to stop them fraying.

Now, place FRONT skirt piece on top of BACK piece with right sides of fabric together. Pin together at side seams at seam allowance and try on for size.

Happy with the f t?

So lets sew up the skirt.

ZIP

Machine stitch only the left hand side seam just up to the notch with a 1.5cm allowance, leaving an opening for the zip at the top.

Then insert the centred zip as follows...





INSERTING THE ZIP

Hand tack a seam, keeping to a 1.5cm seam allowance (mark out a chalk line beforehand if it helps), from the notch to the top edge above the seam just sewn and then press the seam flat open.



Place the zip face down on to the reverse side of the seam, making sure the zip pull is up and its lined up to the top edge.

Pin in place so the centre 'teeth' of the zip are in line with the seam line.



Tack along outer edges of the zip, down one side.....

then the other.



Turn skirt to right side, attach a zip foot to your machine, then, following the tacking lines, sew down one side of zip and across then down the other side. (a good trick is to lay some masking tape along the tacking stitches to use as a guide).

If you dont possess a zip foot attachment, you can stitch the zip by hand using a back stitch with a tiny stitch on the right side and a longer stitch on the reverse.

See The Great British Sewing Bee you tube video for a guide to inserting a centred zip.



Lastly, I remove the tacking stitches with a stitch ripper to reveal the zip ...ta dah!



Sew up the skirt with a 1.5cm seam on the right side.

FACING

Nearly there now, so taking the two facing pieces, join at one short side) the side which doesn't have the zip) with a 1.5cm seam allowance.

Pressing open the seam, then zig zag finish the raw unnotched edge.



Pin the facing to the waist edge with right sides of fabric facing, matching up the notches and side seams and leaving a 1.5cm approx over hang on each far end.

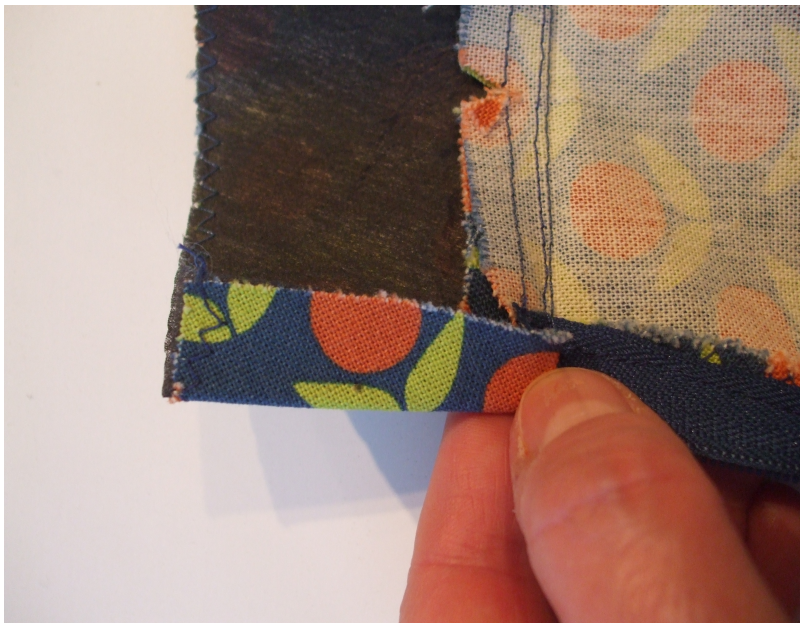
Sew a 1.5cm seam all around. Remove pins.



Notch the raw edge with little Vs all around seam then press up towards facing.



Back on the machine, stitch really close to the seam (6mm) all around on the facing side. (This keeps holds the facing in place).



Fold under the surplus at each far short end, pin, then stitch down neatly by hand, keeping it clear of zip teeth.





HEMMING

So your skirt is nearly complete, its now you can decide what length you would like your skirt, so pop it on, get a friend to mark with pins your desired length.

Remember you need at least an extra 3cm for your hem.

To hem your skirt, fold over 1cm, press then fold again 2cm.

Pin then stitch by hand neatly with an over stitch or sew on the machine for a quick job.



Pop your skirt on and wear with pride happy in the knowledge that you made it yourself!