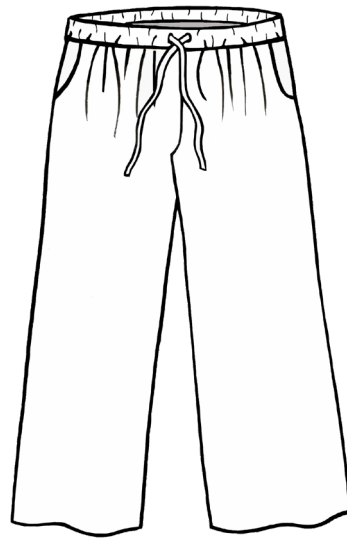
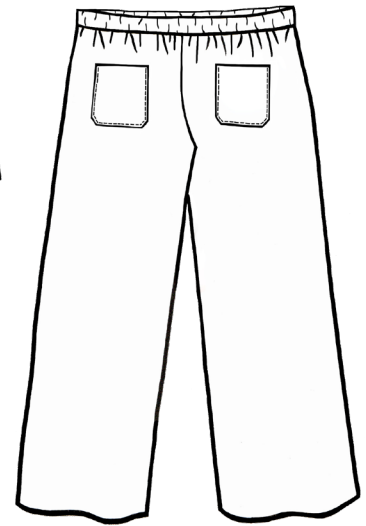


ELSIE DRAWSTRING TROUSERS ALTERNATIVE



FRONT



BACK

Using the Elsie Trouser pattern, you can make a drawstring, elasticated waistband instead. Pull the ties to make a more relaxed fitting trousers which can be made in jersey fabric as well as linen, cotton and viscose.

With a few alterations it's easy to do, following the 'Hack' instructions.
You will need: a loop turner, a safety pin and 1m (1yd) of 20mm ($\frac{3}{4}$ ") elastic.
Elsie Drawstring trousers should not require extra fabric.

To make Elsie Drawstring trousers you will need to cut out the following pieces only:

FRONT (1) - cut two pieces.

BACK (2) - cut two pieces.

FRONT POCKET (3), FRONT POCKET LINING (4) - cut two pieces each (two pairs).

BACK POCKET (9) - cut two.

DRAWSTRING WAISTBAND FRONT & BACK (10) - cut two pieces. Mark the buttonhole positions on one piece only (Front).

DRAWSTRING TIE (11) - cut one-piece on the fold of the fabric. ELASTIC 20mm ($\frac{3}{4}$ ") wide -1.5m (1 $\frac{1}{2}$ yds)
Trim to fit after insertion.

HOW TO MAKE DRAWSTRING ELSIE TROUSERS

Follow the pattern from STEP 1 and STEP 2 (BACK POCKETS).

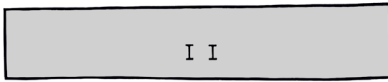
Omit STEP 3. Do not make any Front pleats.

Continue from STEP 4 (MAKING THE SIDE POCKETS) to STEP 13. Then continue as follows:

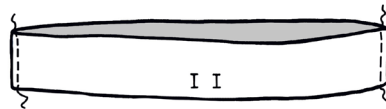
SEWING THE DRAWSTRING TIE

With the right sides together, fold the drawstring tie in half widthways, aligning the long raw edges. Press. Sew down the raw edge and across each short edge, leaving 2cm ($\frac{3}{4}$ ") approx. unstitched at the centre halfway point. Trim the seam allowance to 5mm ($\frac{1}{4}$ "). Turn the tie inside out through the centre opening using a loop turner. Push out the corners each far end. Press.

MAKING THE DRAWSTRING WAISTBAND



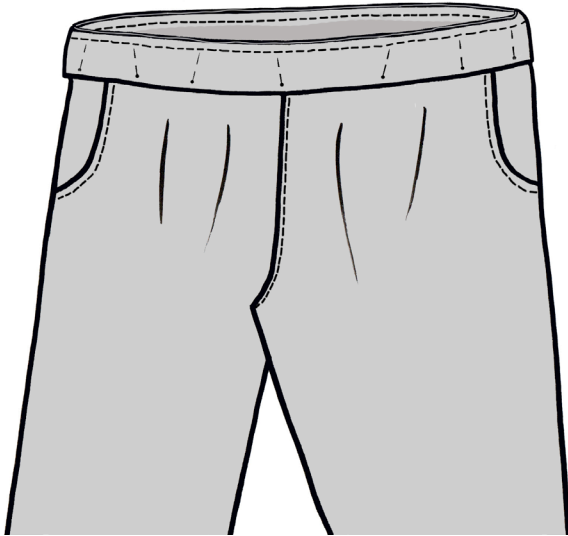
On the Drawstring Waistband Front right side only, sew the two buttonholes in the marked positions as shown on the template.



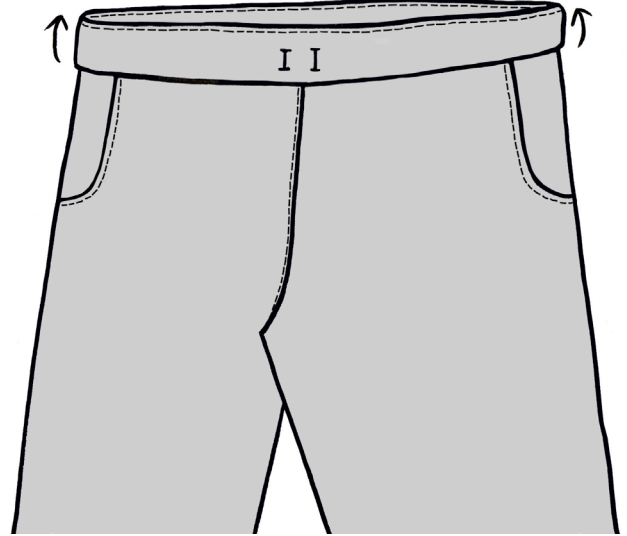
With the right sides together, pin the Drawstring Waistband (pieces 10) at the short edges. Sew. Press the seam allowances open. Topstitch each side of the seam.



With the wrong sides facing together, fold over and press the Waistband in half with the long raw edges matching. Topstitch 5mm (1/4") down from the folded edge all around.

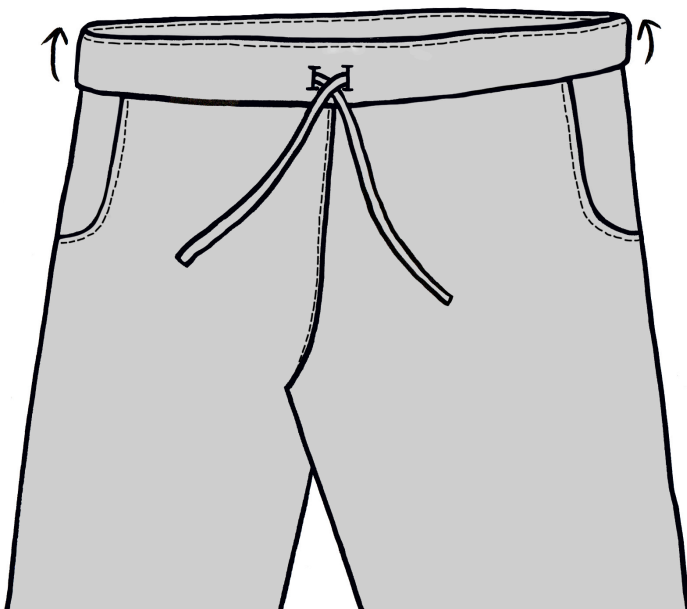


Align the Waistband raw edges together, machine tack all around to secure them together. With the right sides facing together, pin the Waistband to the Trouser top edge, aligning the side seams and centre Front and Back points. Sew all around. Finish the raw edges together.



Press the Waistband upwards with the seam allowance pressed downwards on the reverse side.

INSERTING THE ELASTIC AND TIES



Insert the length of elastic (with a safety pin attached) into the Waistband tube through the buttonhole. Pass all the way round and out the same buttonhole. Pin together the elastic ends, try the trousers on for size. Adjust if needed. Sew the ends together and then push into the Waistband tube so that it is not visible.

Repeat with the Drawstring Tie, pass one end into one buttonhole with a safety pin attached, ease it all around the tube, then pull it, this time, out through the other buttonhole.

Pull the Ties together when the trousers are on to tighten up the waist and secure with a bow.



TEST SQUARE

100% scale

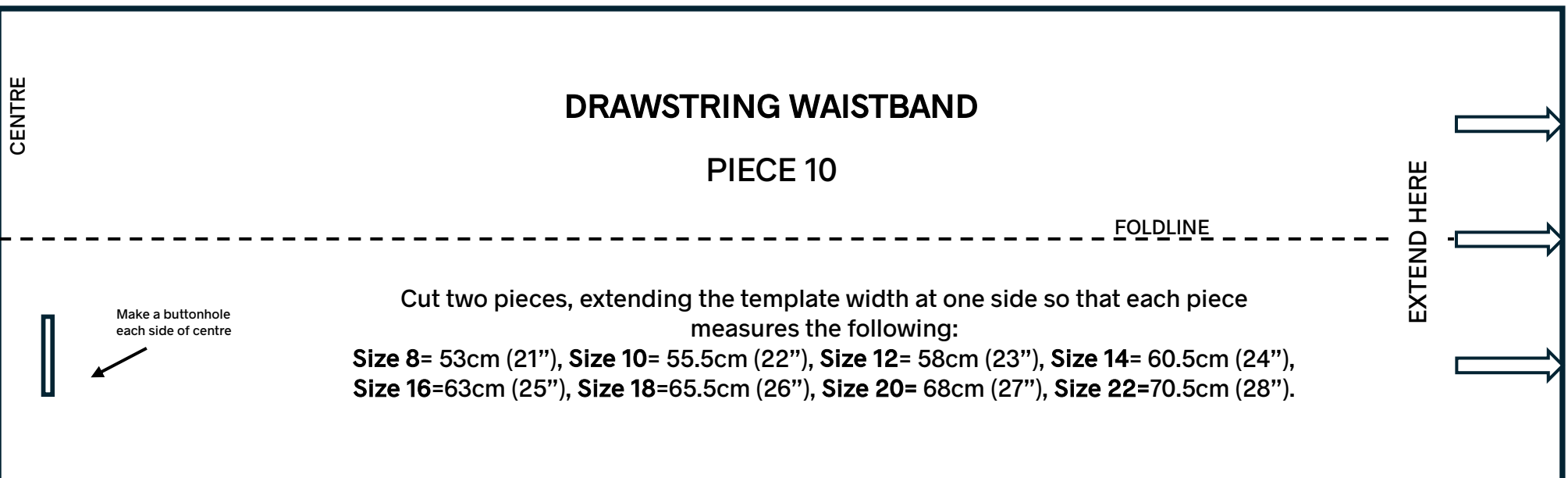
5cm x 5cm

(2 1/2" x 2 1/2")

Print off this template at 100% scale (check test square), then cut out two pieces, extending to the required width at one side according to the measurements indicated for each respective size.



Sewgirl



TEST SQUARE

100% scale

5cm x 5cm

(2 ½" x 2 ½")

Print off this template at scale 100% (check test square), then cut out one piece on the fold of the fabric, extending the template to the required width at one side according to the measurements indicated for each respective size.



Sewgirl

DRAWSTRING TIE PIECE (11)

FOLDLINE

Cut one piece on the fold, extending the template width at one side so that each measures the following:
Size 8= 35cm (14"), **Size 10**= 36.5cm (14 ½"), **Size 12**= 38cm (15"), **Size 14**= 39.5cm (15 ½"), **Size 16**=41cm (16"),
Size 18=42.5cm (16 ½"), **Size 20**= 44cm (17 ¼"), **Size 22**=45.5cm (18").

EXTEND HERE